

Developer




Email: rameshwaramgroup@gmail.com
www.rameshwaramgroup.com

Project Consultant



Virendra Yadav
Dilipsinh Barad
Nanpura, Surat
Ph.: 0261-3018558
vryadav2012@yahoo.com

Structural Designer

 **MKS**
Structural Consultant

Manish K. Sarang
Nanpura, Surat
Mob.: +91-99989 70793
sarangmanish99@gmail.com

SUKUM
PLATINUM

Sensible spaces for the right people!



SHOWROOMS



OFFICES



BANQUET HALL



ROOMS

SUKUM
PLATINUM

SUKUM
PLATINUM

Sukum Platinum is a comprehensive initiative that has spacious office spaces, shopping complex, a swanky banquet hall, and well-furnished rooms. It is in short, a canopy offering all the avenues that you would need for success and happiness.

We deliver what we promise: happiness and satisfaction!

Rameshwaram Group



The Corporate SpAces

Curvaceous exteriors with comfortable interiors: **striking the right balance!**

SUKUM
PLATINUM





SUKUM
PLATINUM

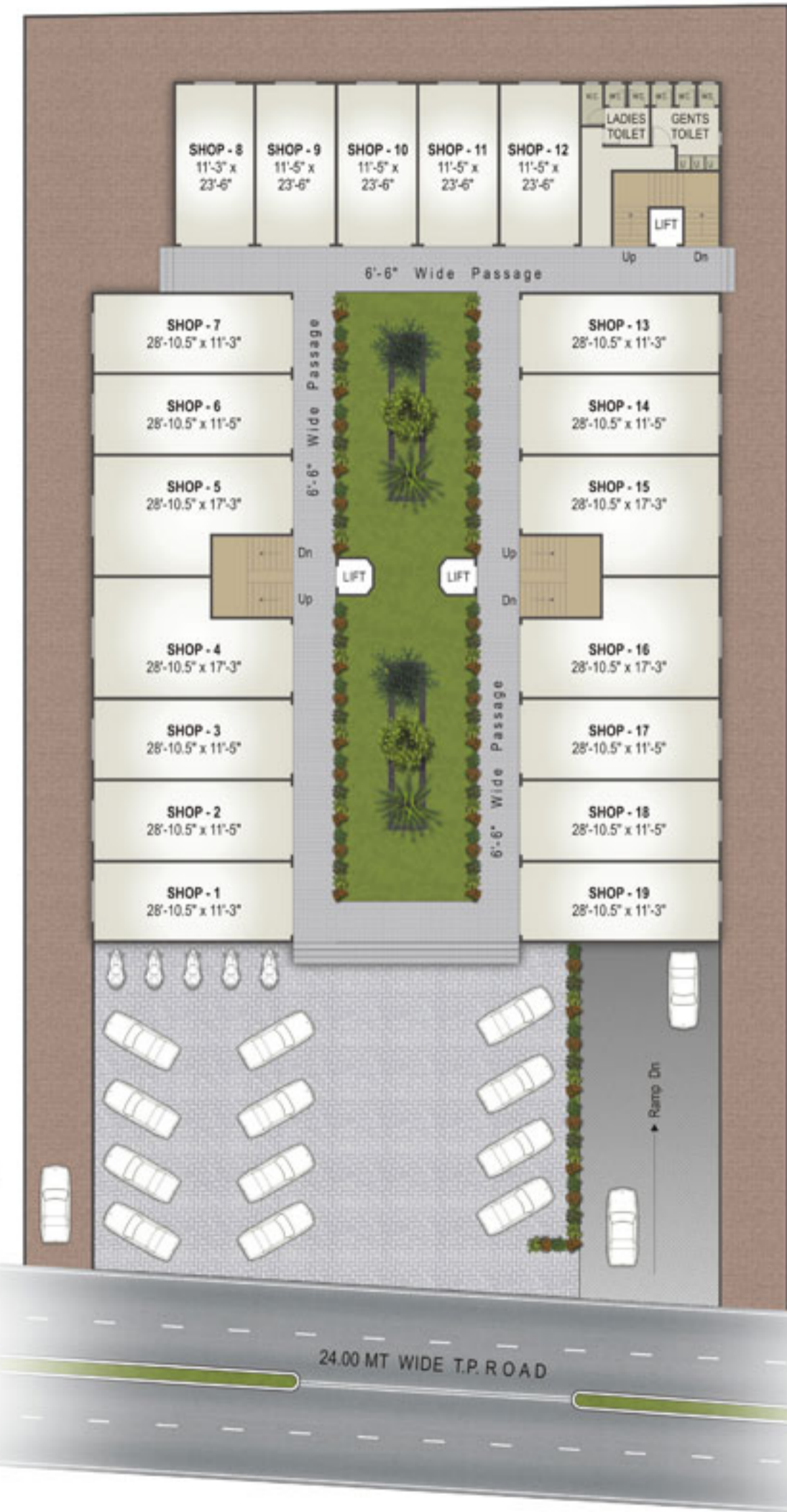


The right equilibrium of style and substance...

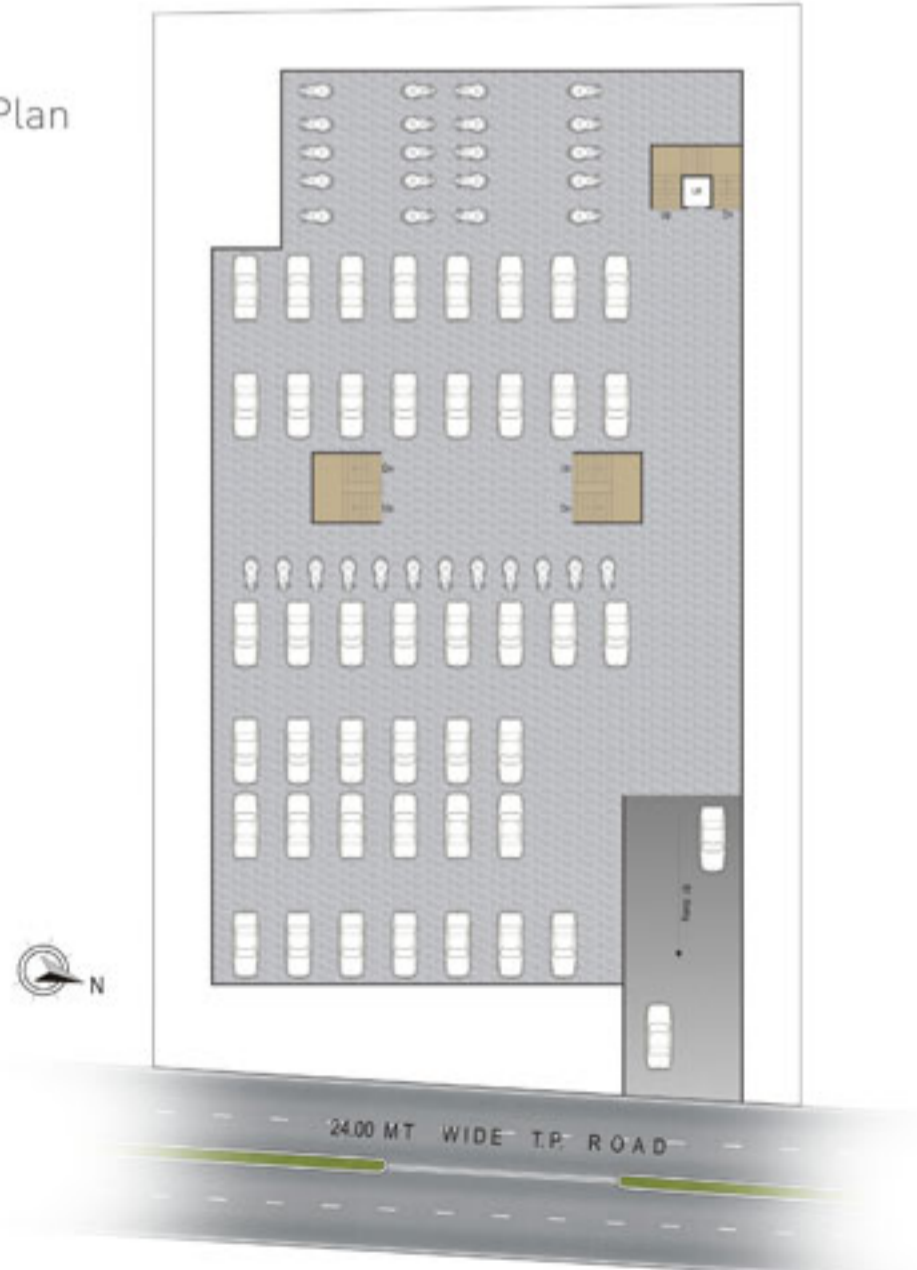




Ground Floor Plan

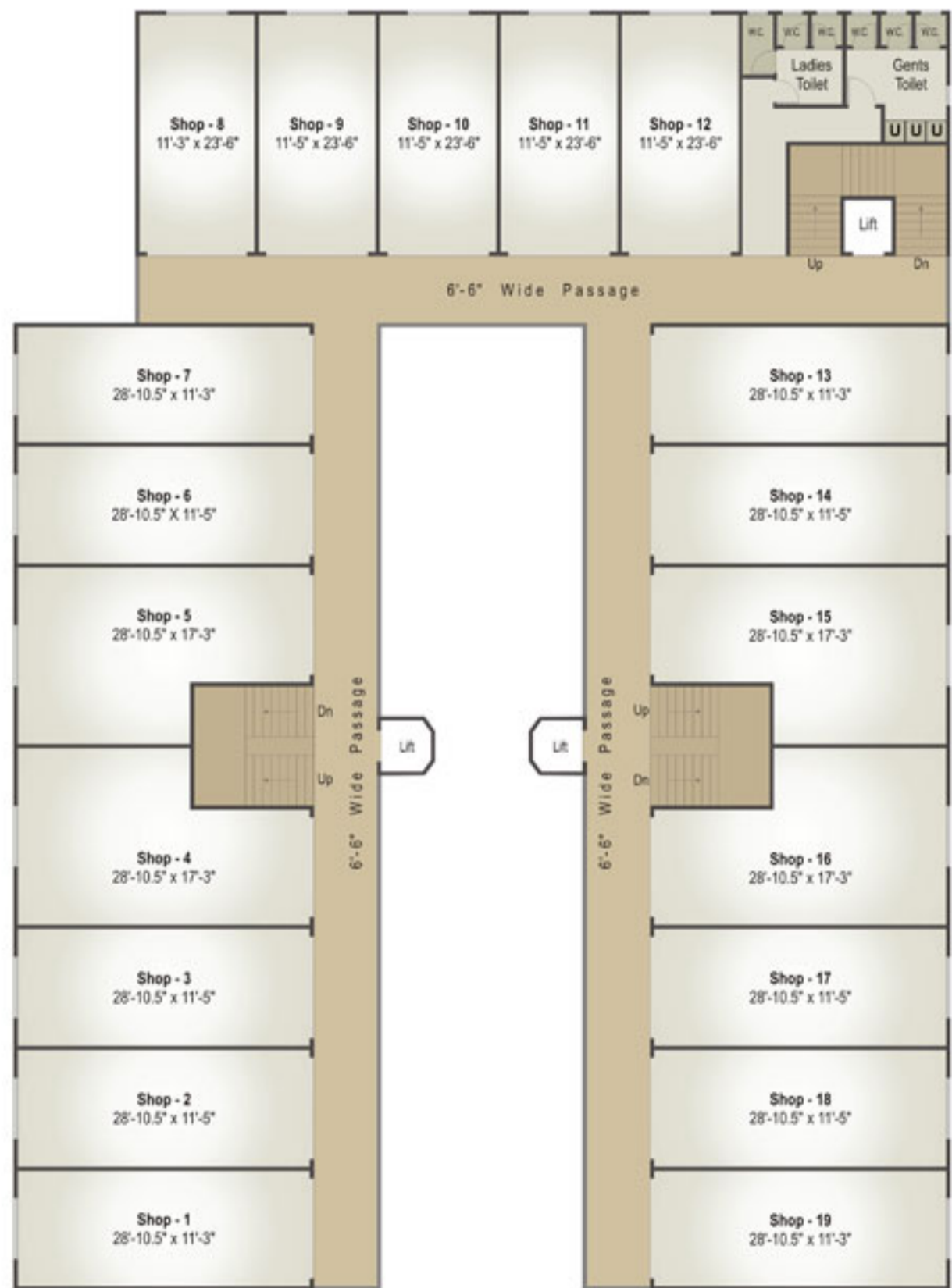


Basement Plan

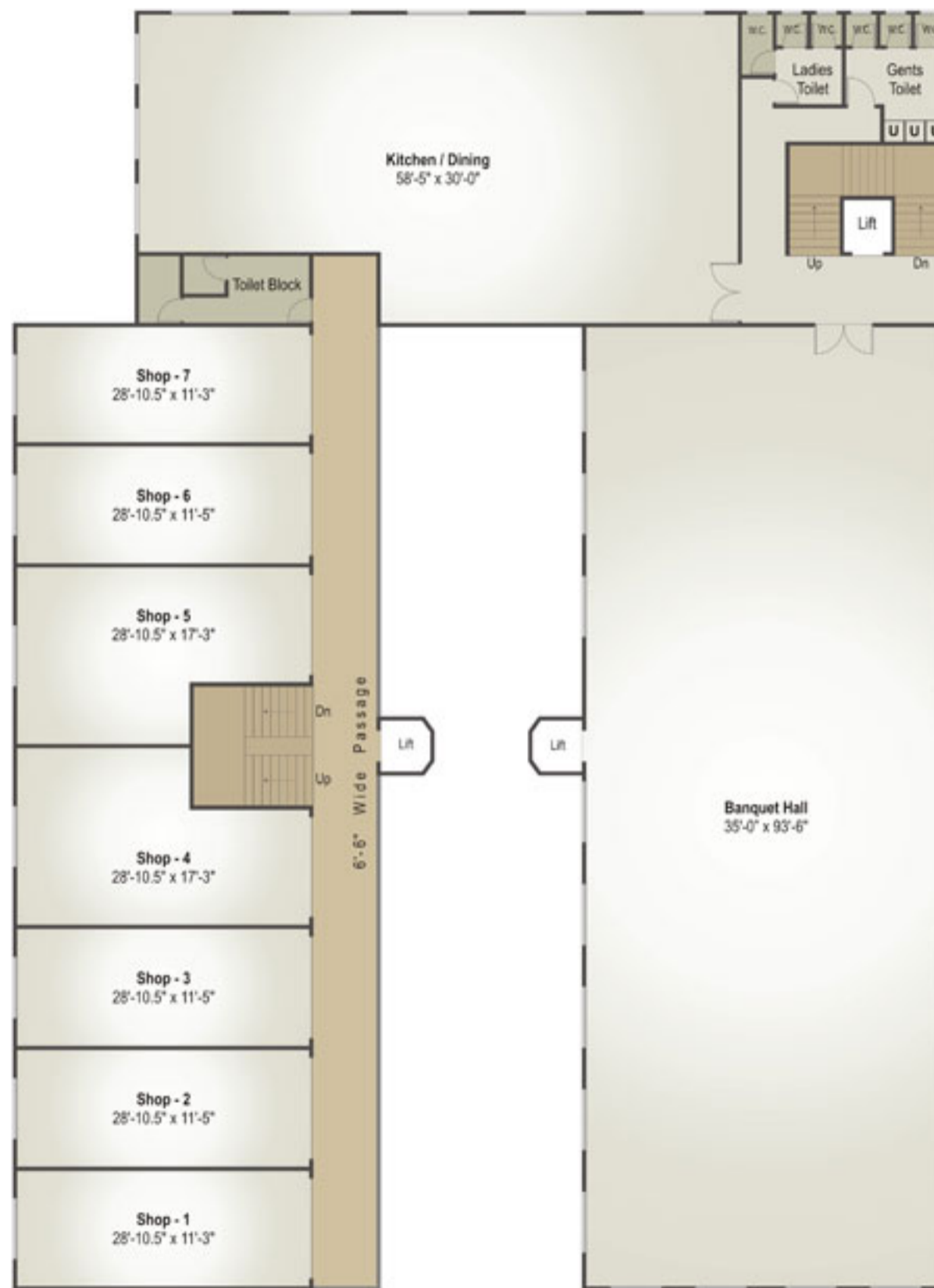


SUKUM
PLATINUM

First & Second Floor Plan



Third Floor Plan



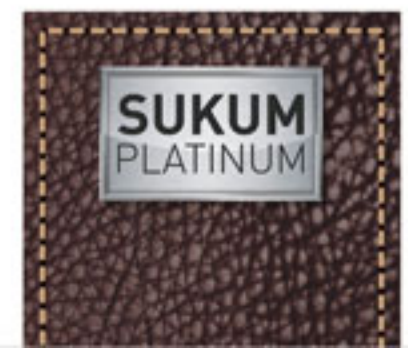


The enigmatic construction relies on symmetric compositions and a rich imagination!



Showrooms
Offices
Banquet Hall
Rooms

Fourth Floor Plan



Key Plan [Not to Scale]



SUKUM PLATINUM

Site Address:
Sukum Platinum
 Nr. Vesu Gam,
 Vesu Abhava Road, Surat.



Amenities

- **External Facade**
Elegant appearance of building
- **Lift and Security System**
2 High speed Capsule lifts and one standard lift
- **Power Back-up Facility**
100% Power back-up for Common/Passage area, Lift, Basement Parking area & Surrounding building area
- **Parking**
Well planned ample Parking space in front of the building and Basement area
- **Landscaping**
Beautifully designed Landscaping area at Ground floor
- **Water Connection**
SMC Water Connection for whole premises
- **Flooring**
Granamite Flooring in all areas. For stairs, Granite stone in treads and risers
- **Electrification**
Exclusive Modular Switches with standard quality Cables as per Consultant's specification

Terms

- All rights are reserved by the developer / Owner
- Legal charges, Registration fee, Stamp duty, GEB connection charges, Gas connection charges etc. shall be borne by Members
- External changes which affect the elevation/aesthetics of building shall not be permitted. Even installation of AC units will be permitted in its designated space
- Encroachment in any form in common spaces shall not be allowed
- Subject to Surat Jurisdiction
- This information book is the property of developer and can not be used as legal or reproduced without permission

